

# osf-scan

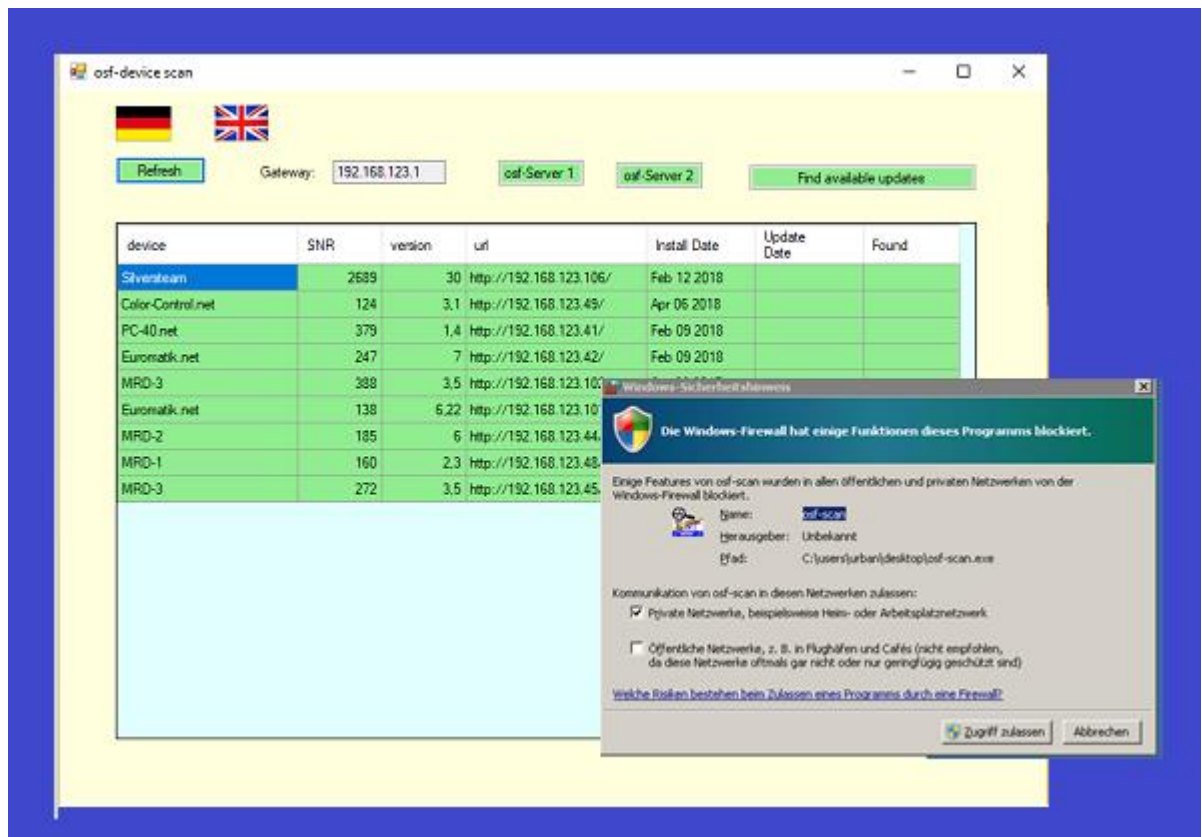
## view osf-devices

"osf-scan.exe" lists all osf devices in the network, who have a program starting 2017.

ZIP-File: <http://osf.de/download/download.php?dll=Netzwerk/osf-scan.zip>

1. Download
2. Extract the program from the ZIP file and save it on the computer.
3. Start Program.

For some versions of Windows, the Windows Firewall logs in after the devices have been searched for.



4. Allow access to private networks.
5. Click Search again.

### Android-Version for Mobile devices:

<http://osf.de/download/download.php?dll=Netzwerk/osf-devices.apk>



**osf Hansjürgen Meier . Elektrotechnik und Elektronik GmbH & Co KG**

Postfachanschrift:  
Postfach 1405  
D-32328 Espelkamp

Hausanschrift:  
Eichendorffstrasse 6  
D-32339 Espelkamp

Telefon (05772) 9704-0  
Telefax (05772) 5730

E-Mail: info@osf.de  
Internet: www.osf.de

